

# SAN FRANCISCO EXECUTIVE PARK



## 150 - 250 Executive Park

*For more information, contact:*

**Carla Scimemi**  
415.229.8955

carlas@kiddermathews.com  
LIC #01323582

[www.kiddermathews.com](http://www.kiddermathews.com)

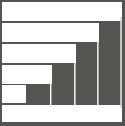
[www.sfexecutivepark.com](http://www.sfexecutivepark.com)

### FEATURES

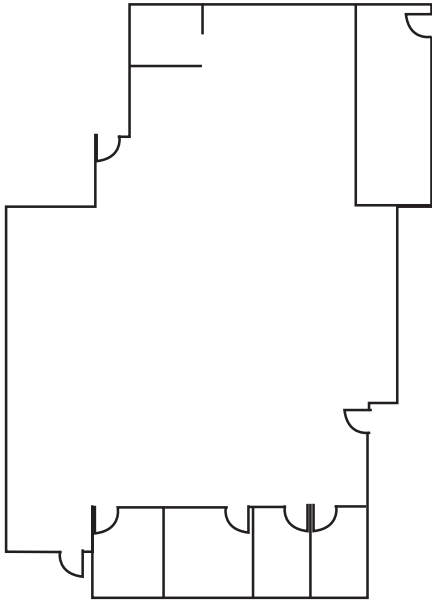
- Bay views
- Free BART shuttle
- Minutes to airport
- On-site cafe
- Complimentary use of conference room
- 24 hour security
- Live cam building
- Within the city, without the hassle

### SPACES AVAILABLE

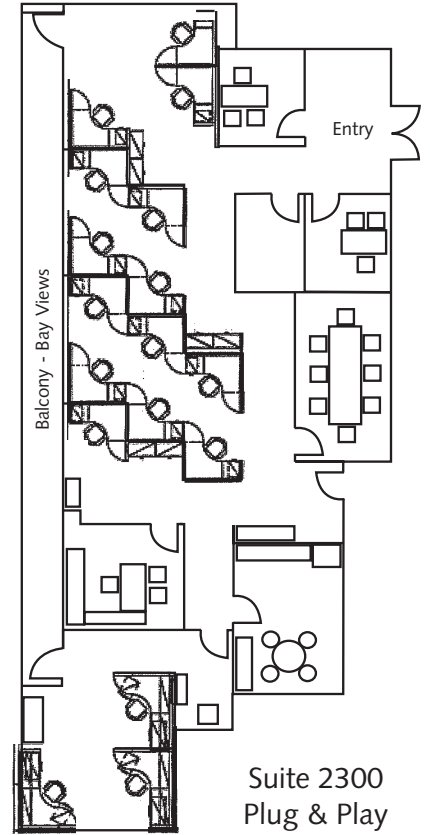
150 Executive Park Suites	Square Footage
1300	±4,425
2300 (Plug & Play, Balcony)	±3,248
2400 (Plug & Play)	±2,362
3700	±1,426
3750 (Bay Views)	±5,500
4100 (Bay Views, Plug & Play)	±7,353
4200	±3,447
4300	±1,364
4525 (Plug & Play)	±643
4600	±637
4700	±694
250 Executive Park Suites	Square Footage
4000 (Bay Views)	±13,223
4200 (Bay Views)	±2,162



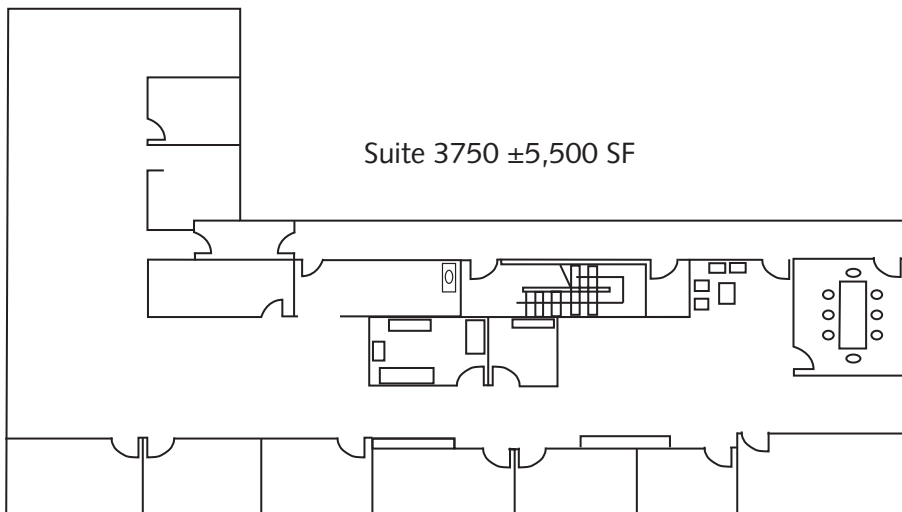
FLOOR PLANS - 150 EXECUTIVE PARK



Suite 1300  
±4,425 SF

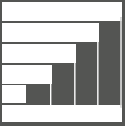


Suite 2300  
Plug & Play  
±3,248 SF

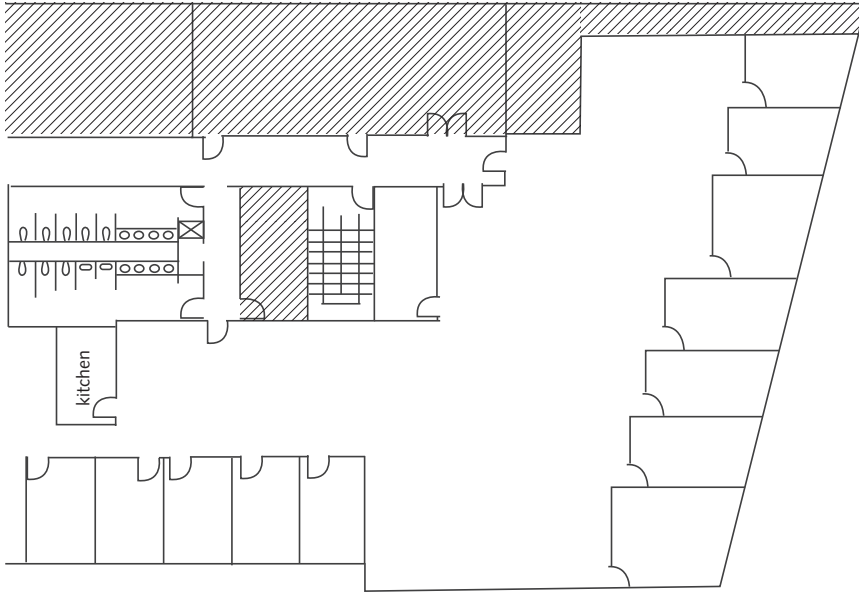


Suite 3750 ±5,500 SF

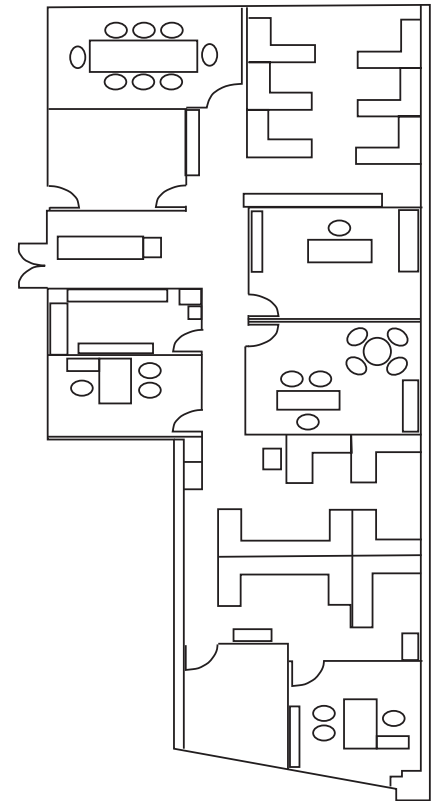
For more information, contact: **Carla Scimemi** LIC #01323582 | 415.229.8955 | carlas@kiddermathews.com



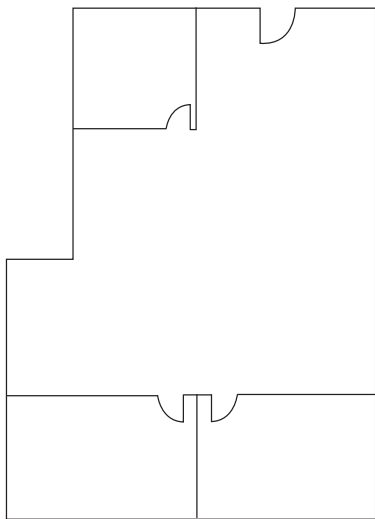
FLOOR PLANS - 150 EXECUTIVE PARK



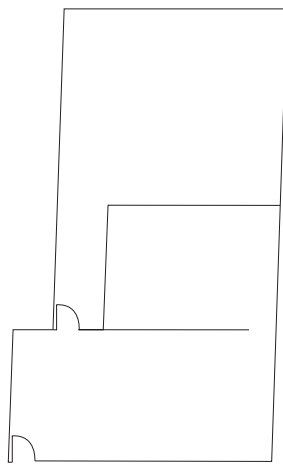
Suite 4100 ±7,353 SF



Suite 4200 ±3,444 SF

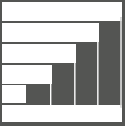


Suite 4300 ±1,364 SF

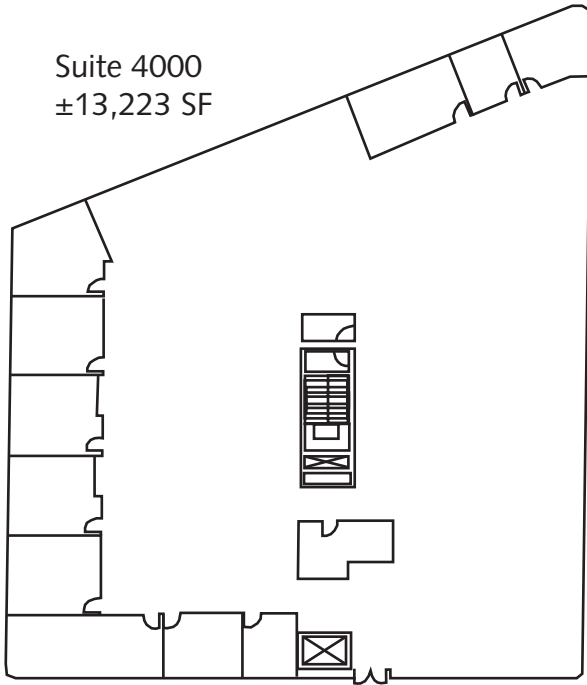


Suite 4700 ± 694 SF

For more information, contact: **Carla Scimemi** LIC #01323582 | 415.229.8955 | carlas@kiddermathews.com



FLOOR PLANS - 250 EXECUTIVE PARK



For more information, contact: **Carla Scimemi** LIC #01323582 | 415.229.8955 | [carlas@kiddermathews.com](mailto:carlas@kiddermathews.com)