

SAN FRANCISCO EXECUTIVE PARK



5 Thomas Mellon Circle

For more information, contact:

Carla Scimemi
415.229.8955

carlas@kiddermathews.com
LIC #01323582

www.kiddermathews.com

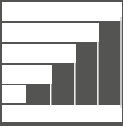
www.sfexecutivepark.com

FEATURES

- Bay views
- Free parking
- Deli on site, tranquil courtyard setting
- Free use of conference room
- Building signage available
- Panoramic bay views
- Opportunity to broadcast corporate messages with Freeway 101 visibility, which reaches over 200,000 vehicles per month.

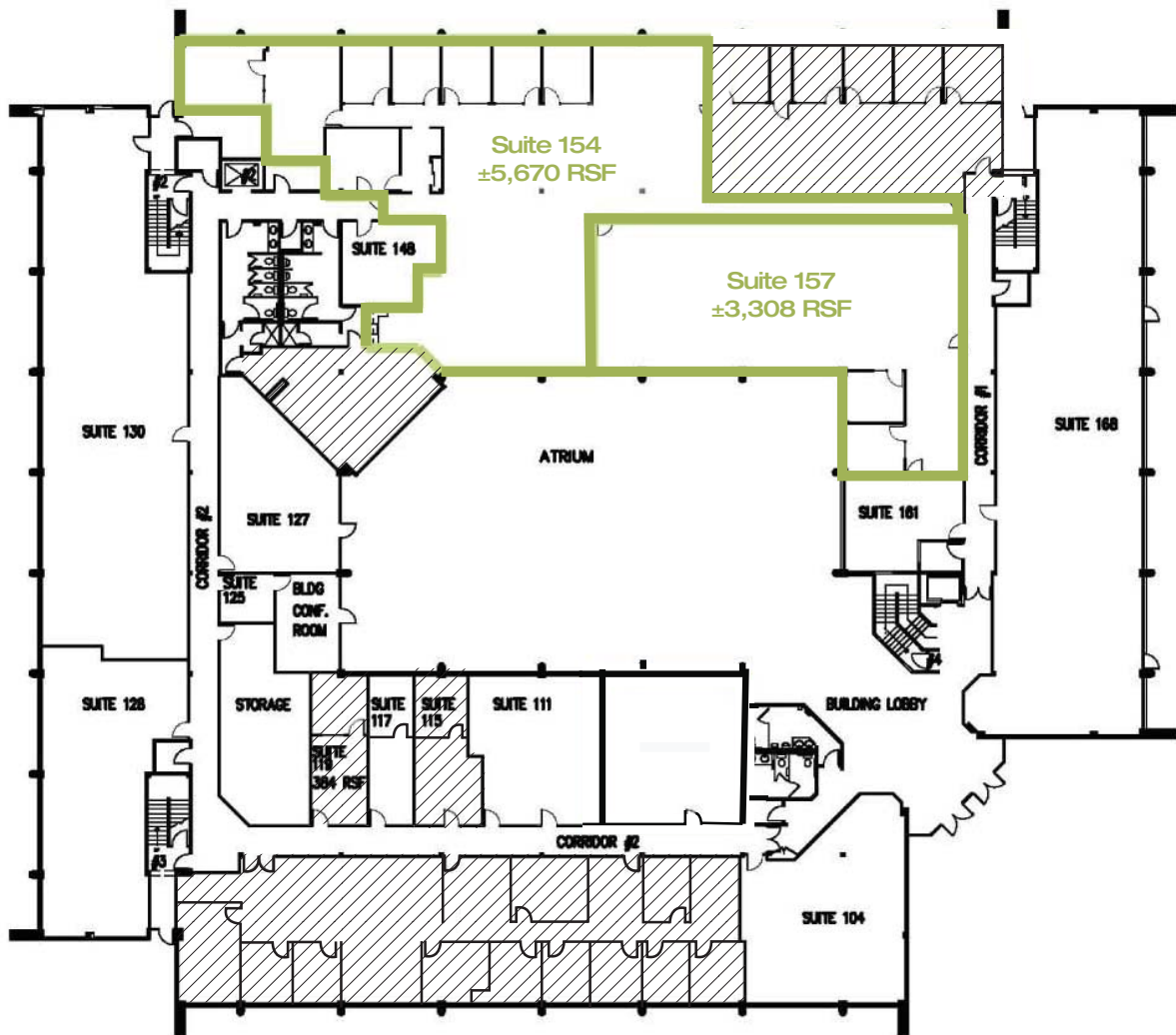
SPACES AVAILABLE

5 Thomas Mellon Suites	Sq. Ft.	5 Thomas Mellon Suites	Sq. Ft.
108	±965	220	±1,715
110	±1,987	225	±6,800
108 & 110 Contiguous	±2,952	241	±1,080
119	±396	244	±1,226
154 (154a & 154b)	±5,670	248	±1,954
154a	±4,429	218, 220, 225 & 241 Contiguous	±10,270
154b	±1,241	300	±11,915
157	±3,306	302	±8,086
154a, 154b & 157 Contiguous	±8,976	305	±8,870
202	±2,935	300, 302 & 305 Contiguous	±28,871
218	±675		



FLOOR PLANS

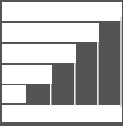
Ground Floor



Floorplans not to scale

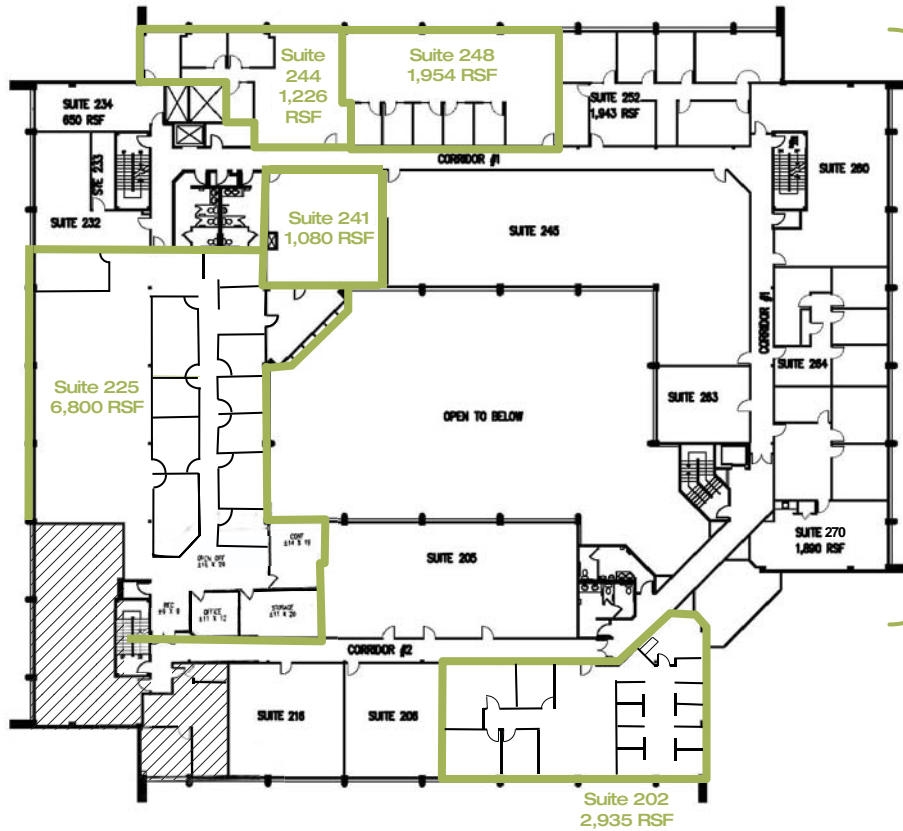
For more information, contact: **Carla Scimemi** LIC #01323582 | 415.229.8955 | carlas@kiddermathews.com

This information supplied herein is from sources we deem reliable. It is provided without any representations, warranty or guarantee, expressed or implied as to its accuracy. Prospective Buyer or Tenant should conduct an independent investigation and verification of all matters deemed to be material, including, but not limited to, statements of income and expenses. CONSULT YOUR ATTORNEY, ACCOUNTANT, OR OTHER PROFESSIONAL ADVISOR.



FLOOR PLANS

Second Floor

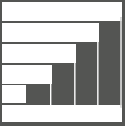


Bay Views

Floorplans not to scale

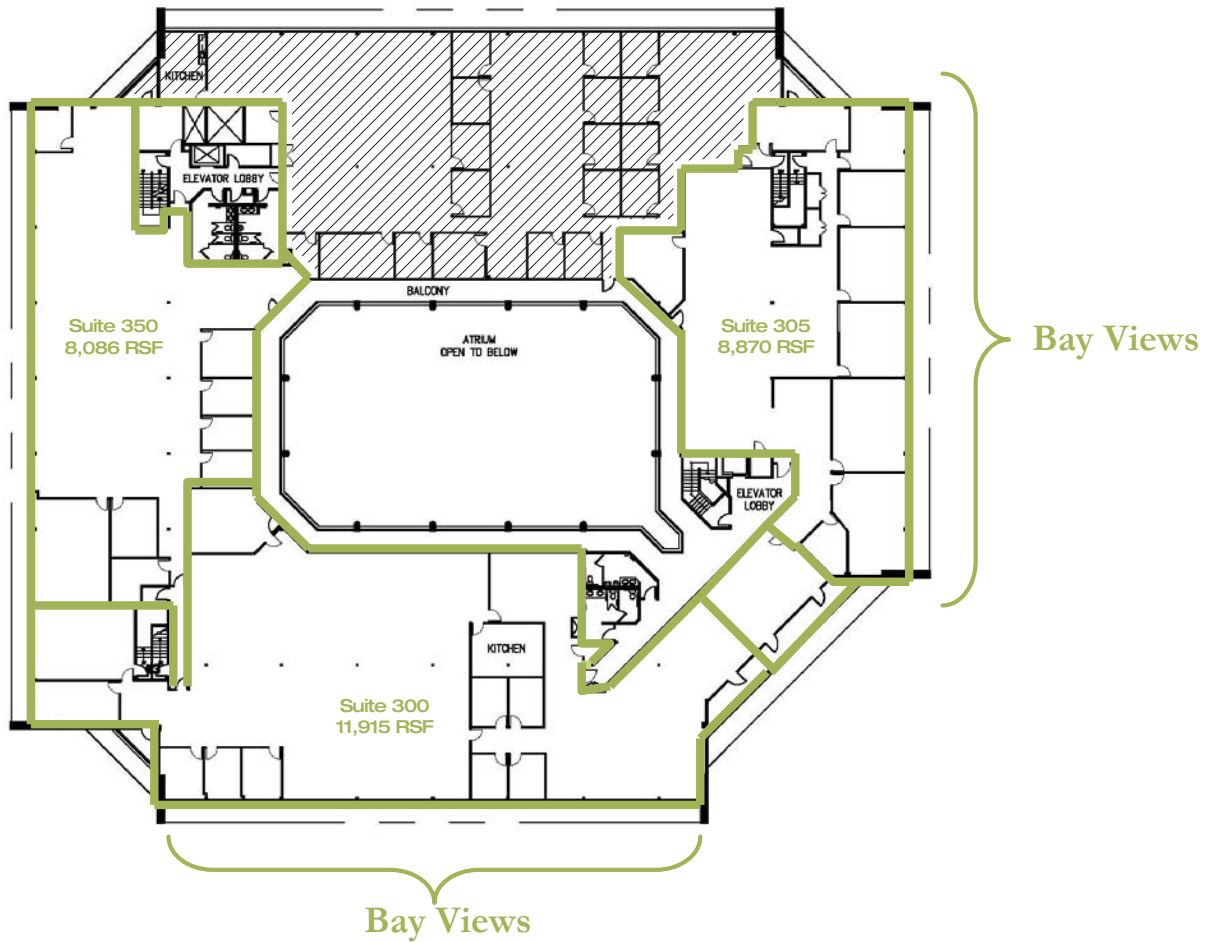
For more information, contact: **Carla Scimemi** LIC #01323582 | 415.229.8955 | carlas@kiddermathews.com

This information supplied herein is from sources we deem reliable. It is provided without any representations, warranty or guarantee, expressed or implied as to its accuracy. Prospective Buyer or Tenant should conduct an independent investigation and verification of all matters deemed to be material, including, but not limited to, statements of income and expenses. CONSULT YOUR ATTORNEY, ACCOUNTANT, OR OTHER PROFESSIONAL ADVISOR.



FLOOR PLANS

Third Floor



Floorplans not to scale

For more information, contact: **Carla Scimemi** LIC #01323582 | 415.229.8955 | carlas@kiddermathews.com

This information supplied herein is from sources we deem reliable. It is provided without any representations, warranty or guarantee, expressed or implied as to its accuracy. Prospective Buyer or Tenant should conduct an independent investigation and verification of all matters deemed to be material, including, but not limited to, statements of income and expenses. CONSULT YOUR ATTORNEY, ACCOUNTANT, OR OTHER PROFESSIONAL ADVISOR.