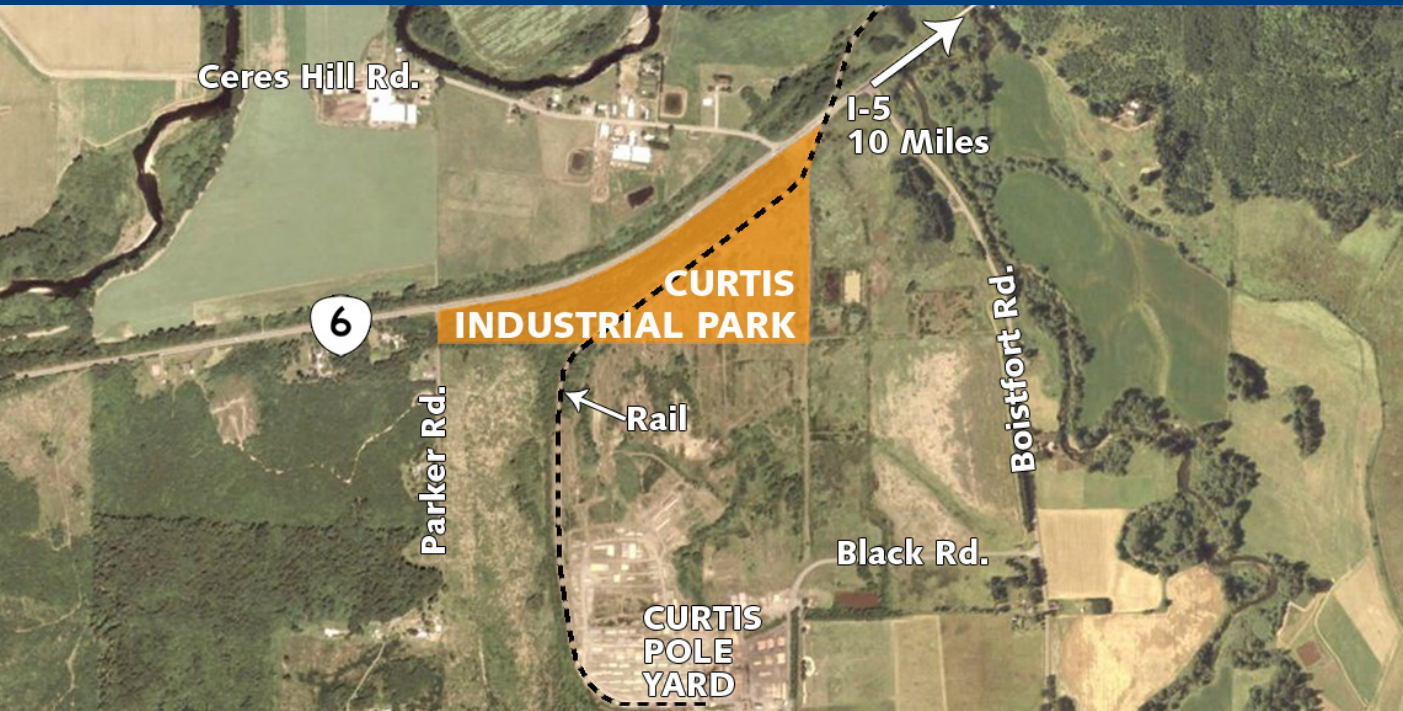


Curtis Industrial Park

A Port of Chehalis Project

AVAILABLE



Features

- **Site:** Curtis Industrial Park
- **Size:** 40 acres Gross/ 20-25 acres net usable
- **Rail:** Port of Chehalis w/BN & UP access
- **Utilities:** Lewis Co. PUD #1, Boist Fort Valley Water District
- **Zoning:** Industrial
- **Topo:** Level
- **Jurisdiction:** Lewis County
- **Parcels:** 019482001001
- **Location:** 10 miles west of I-5 at Chehalis exit 76 to SR6



Contact

Scott Fraser, CCIM, SIOR

360.891.6600 (WA)
503.221.2268 (OR)
sfraser@gvakm.com

Sean McCarthy

360.891.6600 (WA)
503.221.2278 (OR)
seanm@gvakm.com

Matt Wood, SIOR

206.248.7300 (WA)
360.891.6600 (WA)
503.221.9900 (OR)
mwood@gvakm.com

www.gvakm.com

This information supplied herein is from sources we deem reliable. It is provided without any representation, warranty or guarantee, expressed or implied as to its accuracy. Prospective Buyer or Tenant should conduct an independent investigation and verification of all matters deemed to be material, including, but not limited to, statements of income and expenses. Consult your attorney, accountant, or other professional advisor.

Curtis Industrial Park

A Port of Chehalis Project

AVAILABLE



Contact

Scott Fraser, CCIM, SIOR

360.891.6600 (WA)
503.221.2268 (OR)
sfraser@gvakm.com

Sean McCarthy

360.891.6600 (WA)
503.221.2278 (OR)
seanm@gvakm.com

Matt Wood, SIOR

206.248.7300 (WA)
360.891.6600 (WA)
503.221.9900 (OR)
mwood@gvakm.com

www.gvakm.com

This information supplied herein is from sources we deem reliable. It is provided without any representation, warranty or guarantee, expressed or implied as to its accuracy. Prospective Buyer or Tenant should conduct an independent investigation and verification of all matters deemed to be material, including, but not limited to, statements of income and expenses. Consult your attorney, accountant, or other professional advisor.